



Kingfisher Wind farms chart

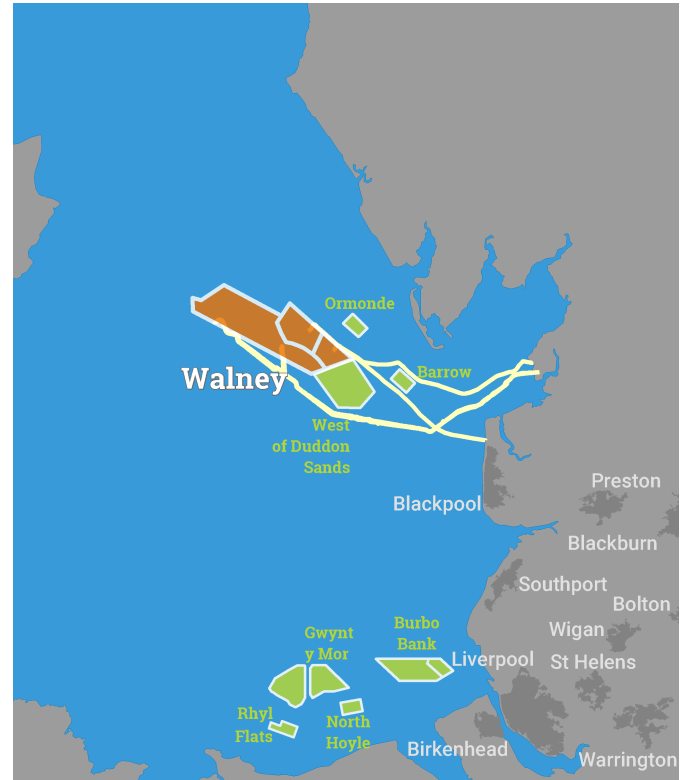
Walney 1-3 offshore wind farm
January 2020

Description

The Walney 1-4 Offshore Wind Farm is operated by Orsted. It is situated approximately 14 km from shore in the East Irish Sea, off the North Lancashire coast. Walney 1 wind farm is fully operational and has 51 turbines, a total capacity of 183.6 MW and covers an area of approximately 28 km². Walney 2 wind farm is fully operational and has 51 turbines, a total capacity of 183 MW and covers an area of approximately 45 km². Walney 3 wind farm is fully operational and has 87 turbines, a total capacity of 659 MW and covers an area of approximately 149 km².

Emergency procedures

1. If you suspect you have snagged a subsea cable or renewable energy structure, DO NOT endanger your vessel and crew by attempting to recover your gear.
2. Carefully plot your vessel's position as accurately as possible.
3. Advise the Coastguard of your situation, and call the 24 hour Emergency Number and state that an incident is occurring concerning a subsea cable or renewable energy structure.



Reducing the risks whilst fishing

To reduce the risks of fishing near offshore structures, it is essential to be up to date with KIS-ORCA information. KIS-ORCA information is easy to install on your vessel's fishing plotter and ensures skippers are able to make informed decisions for their safety.

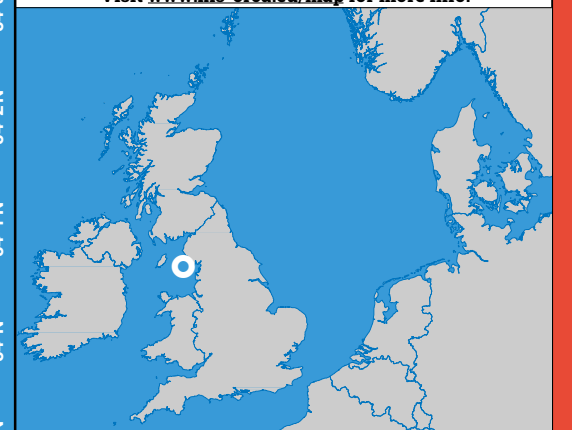
The closer to the surface a subsea cable is lifted when fouled by fishing gear, the more danger there is to the fishing vessel. In the interests of fishing safety and to prevent damage to subsea structures, fishermen are advised to exercise caution when fishing in the vicinity of subsea cables and renewable energy structures. Loss of gear, fishing time and catch can result if a trawler snags a subsea structure and there is serious risk of loss of life.

Emergency contact number +44(0)7772 580026 / +44(0)7879 431220

Walney 1-3 Offshore Wind Farm

- Key
- Site boundary
 - Wind turbine
 - Buoy
 - Substation
 - Export cable
 - Inter array cable
 - Telecomms cable
 - Power cable

Grey coloured features displayed on this chart represent additional offshore wind farm structures. Visit www.kis-orca.eu/map for more info.

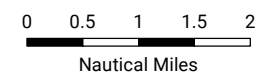


Projection: World_Mercator Spheroid: GCS_WGS_1984 Datum: D_WGS_1984

This data is issued as a guide only. Seafish, cable / structure owners and Distributors accept no responsibility for any inaccuracies however caused.

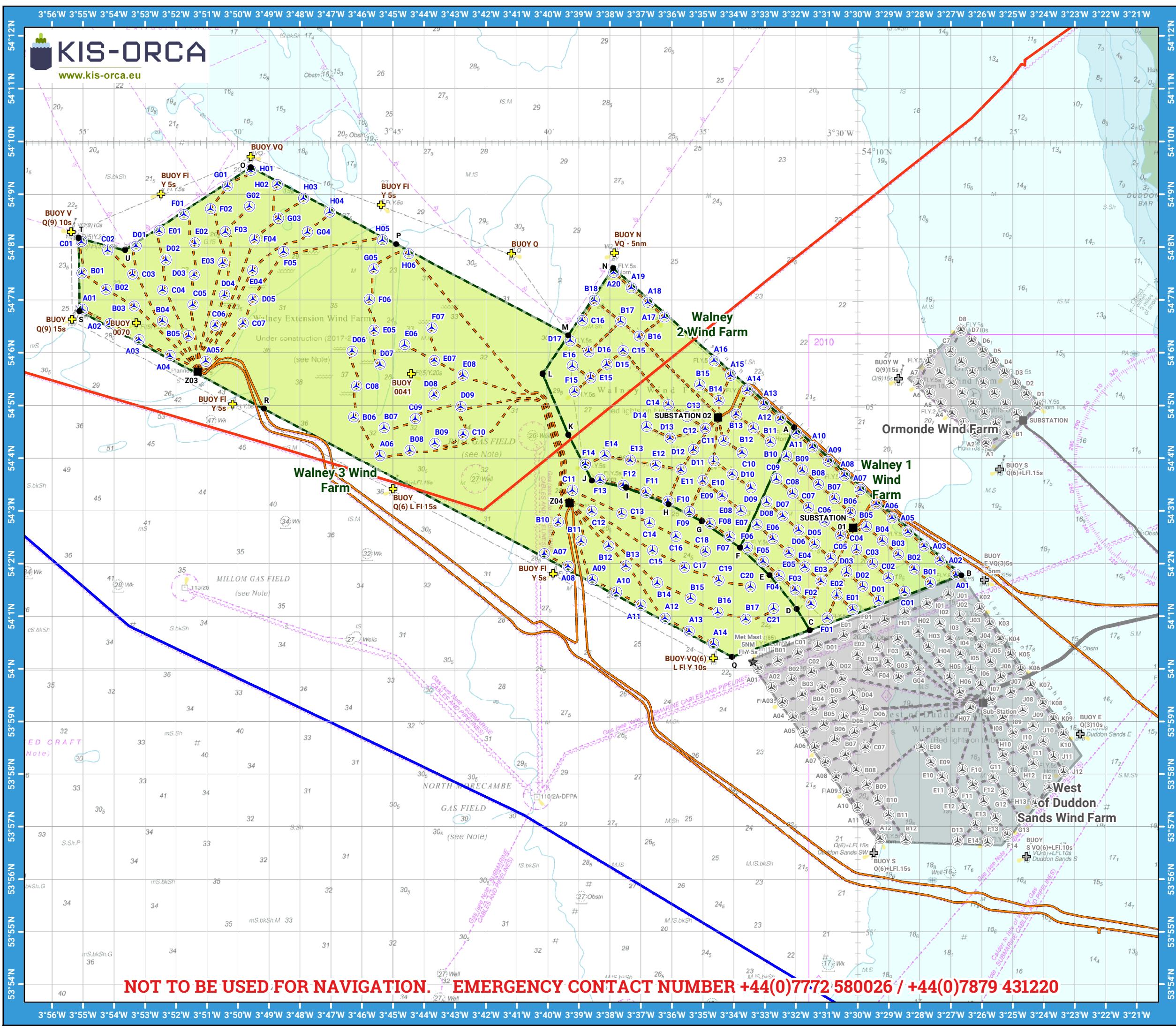
Please be aware that other structures & cables may exist in addition to those shown on this chart.

©Crown Copyright and/or database rights. Reproduced by permission of the Controller of Her Majesty's Stationery Office and the UK Hydrographic Office (www.GOV.uk/UKHO).



Scale @ A3: 1:125,000

NOT TO BE USED FOR NAVIGATION. EMERGENCY CONTACT NUMBER +44(0)7772 580026 / +44(0)7879 431220



Asset locations: Walney 1 & 2

Walney 1 Extents

A	54°04.583'N 03°32.061'W
B	54°01.776'N 03°26.667'W
C	54°00.737'N 03°31.555'W
D	54°01.140'N 03°31.977'W
E	54°01.780'N 03°32.853'W
F	54°02.300'N 03°33.804'W

Walney 2 Extents

G	54°02.802'N 03°35.038'W
H	54°03.128'N 03°36.105'W
I	54°03.441'N 03°37.479'W
J	54°03.572'N 03°38.578'W
K	54°04.441'N 03°39.341'W
L	54°05.597'N 03°40.170'W
M	54°06.328'N 03°39.341'W
N	54°07.603'N 03°37.894'W

Infrastructure

SUBSTATION 01	54°02.682'N 03°30.153'W
BUOY N VQ - 5nm	54°07.890'N 03°37.850'W
BUOY Q	54°07.880'N 03°41.169'W
SUBSTATION 02	54°04.771'N 03°34.507'W

Walney 1 Turbines

A01	54°01.796'N 03°26.839'W
A02	54°02.064'N 03°27.353'W
A03	54°02.332'N 03°27.868'W
A04	54°02.599'N 03°28.383'W
A05	54°02.867'N 03°28.898'W
A06	54°03.135'N 03°29.413'W
A07	54°03.403'N 03°29.928'W
A08	54°03.670'N 03°30.444'W
A09	54°03.938'N 03°30.959'W
A10	54°04.206'N 03°31.474'W
A11	54°04.473'N 03°31.990'W
B01	54°01.630'N 03°27.670'W
B02	54°01.898'N 03°28.185'W
B03	54°02.166'N 03°28.700'W
B04	54°02.434'N 03°29.215'W
B05	54°02.702'N 03°29.730'W
B06	54°02.969'N 03°30.245'W
B07	54°03.237'N 03°30.760'W
B08	54°03.504'N 03°31.276'W
B09	54°03.772'N 03°31.792'W
B10	54°04.040'N 03°32.307'W
C01	54°01.465'N 03°28.502'W
C02	54°01.732'N 03°29.017'W
C03	54°02.000'N 03°29.532'W
C04	54°02.268'N 03°30.047'W
C05	54°02.536'N 03°30.562'W
C06	54°02.803'N 03°31.077'W
C07	54°03.071'N 03°31.593'W
C08	54°03.338'N 03°32.108'W
C09	54°03.606'N 03°32.624'W
D01	54°01.299'N 03°29.333'W

Walney 1 Turbines

D02	54°01.567'N 03°29.848'W
D03	54°01.835'N 03°30.364'W
D04	54°02.102'N 03°30.879'W
D05	54°02.370'N 03°31.394'W
D06	54°02.637'N 03°31.909'W
D07	54°02.905'N 03°32.424'W
D08	54°03.173'N 03°32.940'W
E01	54°01.133'N 03°30.165'W
E02	54°01.401'N 03°30.680'W
E03	54°01.669'N 03°31.195'W
E04	54°01.936'N 03°31.710'W
E05	54°02.204'N 03°32.225'W
E06	54°02.471'N 03°32.741'W
E07	54°02.739'N 03°33.256'W
F01	54°00.968'N 03°30.996'W
F02	54°01.235'N 03°31.512'W
F03	54°01.503'N 03°32.026'W
F04	54°01.770'N 03°32.541'W
F05	54°02.038'N 03°33.057'W
F06	54°02.305'N 03°33.572'W

Walney 2 Turbines

A12	54°04.741'N 03°32.506'W
A13	54°05.017'N 03°33.039'W
A14	54°05.294'N 03°33.572'W
A15	54°05.570'N 03°34.106'W
A16	54°05.846'N 03°34.639'W
A17	54°06.675'N 03°36.240'W
A18	54°06.951'N 03°36.774'W
A19	54°07.227'N 03°37.308'W
A20	54°07.522'N 03°37.877'W
B11	54°04.307'N 03°32.823'W
B12	54°04.570'N 03°33.376'W
B13	54°04.832'N 03°33.929'W
B14	54°05.094'N 03°34.483'W
B15	54°05.389'N 03°35.106'W
B16	54°06.311'N 03°37.057'W
B17	54°06.593'N 03°37.652'W
B18	54°06.995'N 03°38.503'W
C10	54°04.102'N 03°33.734'W
C11	54°04.331'N 03°34.329'W
C12	54°04.559'N 03°34.924'W
C13	54°04.788'N 03°35.518'W
C14	54°05.016'N 03°36.114'W
C15	54°06.043'N 03°37.574'W
C16	54°06.612'N 03°38.890'W
D09	54°03.440'N 03°33.455'W
D10	54°03.694'N 03°34.055'W
D11	54°03.948'N 03°34.655'W
D12	54°04.160'N 03°35.302'W
D13	54°04.378'N 03°36.057'W
D14	54°04.596'N 03°36.812'W
D15	54°05.776'N 03°38.096'W

Walney 2 Turbines

D16	54°06.018'N 03°38.682'W
D17	54°06.228'N 03°39.276'W
E08	54°03.006'N 03°33.772'W
E09	54°03.285'N 03°34.377'W
E10	54°03.573'N 03°35.027'W
E11	54°03.778'N 03°35.703'W
E12	54°03.870'N 03°36.522'W
E13	54°03.962'N 03°37.341'W
E14	54°04.054'N 03°38.161'W
E15	54°05.522'N 03°38.618'W
E16	54°05.748'N 03°39.208'W
F07	54°02.508'N 03°34.135'W
F08	54°02.762'N 03°34.770'W
F09	54°02.988'N 03°35.435'W
F10	54°03.185'N 03°36.125'W
F11	54°03.353'N 03°36.838'W
F12	54°03.490'N 03°37.570'W
F13	54°03.595'N 03°38.316'W
F14	54°03.885'N 03°38.787'W
F15	54°05.268'N 03°39.140'W



Contact us

+44 (0) 1472 252 307
kingfisher@seafish.co.uk
[@kingfisherinfo](https://www.kingfisherinfo.org)
www.kingfishercharts.org

Stay up to date: Always ensure you have the latest Kingfisher Bulletin and Offshore Fishing Plotter on-board

Asset locations: Walney 3

Walney 3 Extents

O	54°09.512'N 03°49.581'W
P	54°08.057'N 03°44.893'W
R	54°04.940'N 03°49.151'W
S	54°06.785'N 03°55.101'W
T	54°08.173'N 03°55.134'W
U	54°07.946'N 03°53.629'W
Q	54°00.227'N 03°34.065'W

Walney 3 Infrastructure

BUOY 0041	54°05.600'N 03°44.400'W
BUOY 0070	54°06.565'N 03°53.261'W
BUOY FI Y 5s	54°08.800'N 03°45.371'W
BUOY FI Y 5s	54°05.026'N 03°50.160'W
BUOY FI Y 5s	54°09.006'N 03°52.472'W
BUOY FI Y 5s	54°01.812'N 03°39.824'W
BUOY Q(6) L FI 15s	54°03.419'N 03°44.990'W
BUOY Q(9) 15s	54°06.632'N 03°55.335'W
BUOY V Q(9) 10s	54°08.292'N 03°55.365'W
BUOY VQ	54°09.719'N 03°49.576'W
BUOY VQ(6) L FI Y 10s	54°00.205'N 03°34.661'W
Z03	54°05.645'N 03°51.290'W
Z04	54°03.151'N 03°39.298'W

Walney 3 Turbines

A01	54°06.823'N 03°55.010'W
A02	54°06.545'N 03°54.128'W
A03	54°06.251'N 03°53.179'W
A04	54°05.942'N 03°52.182'W
A05	54°05.836'N 03°51.029'W
A06	54°04.051'N 03°45.416'W
A07	54°02.186'N 03°40.116'W
A08	54°01.944'N 03°39.347'W
A09	54°01.699'N 03°38.566'W
A10	54°01.454'N 03°37.785'W
A11	54°01.210'N 03°37.004'W
A12	54°00.965'N 03°36.223'W
A13	54°00.720'N 03°35.442'W
A14	54°00.475'N 03°34.661'W
B01	54°07.510'N 03°55.026'W
B02	54°07.200'N 03°54.247'W
B03	54°06.880'N 03°53.342'W
B04	54°06.599'N 03°52.431'W
B05	54°06.325'N 03°51.585'W
B06	54°04.778'N 03°46.263'W
B07	54°04.573'N 03°45.278'W
B08	54°04.145'N 03°44.448'W
B09	54°04.280'N 03°43.643'W
B10	54°02.788'N 03°39.665'W
B11	54°02.427'N 03°38.923'W
B12	54°02.332'N 03°38.035'W
B13	54°01.953'N 03°37.482'W
B14	54°01.632'N 03°36.468'W
B15	54°01.337'N 03°35.395'W
B16	54°01.079'N 03°34.517'W
B17	54°00.947'N 03°33.616'W

Walney 3 Turbines

C01	54°08.102'N 03°55.040'W
C02	54°07.938'N 03°54.193'W
C03	54°07.487'N 03°53.387'W
C04	54°07.188'N 03°52.422'W
C05	54°06.907'N 03°51.446'W
C06	54°06.518'N 03°50.726'W
C07	54°06.556'N 03°49.828'W
C08	54°05.367'N 03°46.169'W
C09	54°04.746'N 03°44.271'W
C10	54°04.455'N 03°42.731'W
C11	54°03.388'N 03°39.208'W
C12	54°02.994'N 03°38.581'W
C13	54°02.951'N 03°37.618'W
C14	54°02.775'N 03°36.720'W
C15	54°02.250'N 03°36.625'W
C16	54°02.513'N 03°35.871'W
C17	54°01.927'N 03°35.597'W
C18	54°02.230'N 03°34.920'W
C19	54°01.685'N 03°34.486'W
C20	54°01.556'N 03°33.467'W
C21	54°01.150'N 03°32.719'W
D01	54°08.018'N 03°53.277'W
D02	54°07.760'N 03°52.312'W
D03	54°07.474'N 03°51.402'W
D04	54°07.093'N 03°50.424'W
D05	54°07.015'N 03°49.508'W
D06	54°06.031'N 03°46.310'W
D07	54°05.774'N 03°45.411'W
D08	54°05.196'N 03°43.670'W
D09	54°04.976'N 03°42.806'W
E01	54°08.309'N 03°52.525'W

Walney 3 Turbines

E02	54°08.079'N 03°51.381'W
E03	54°07.705'N 03°50.478'W
E04	54°07.565'N 03°49.519'W
E05	54°06.426'N 03°45.607'W
E06	54°06.146'N 03°44.618'W
E07	54°05.852'N 03°43.661'W
E08	54°05.571'N 03°42.741'W
F01	54°08.615'N 03°51.735'W
F02	54°08.722'N 03°50.875'W
F03	54°08.292'N 03°50.395'W
F04	54°08.149'N 03°49.456'W
F05	54°07.913'N 03°48.518'W
F06	54°07.009'N 03°45.754'W
F07	54°06.469'N 03°43.742'W
G01	54°09.159'N 03°50.328'W
G02	54°08.769'N 03°49.621'W
G03	54°08.547'N 03°48.689'W
G04	54°08.285'N 03°47.747'W
G05	54°07.589'N 03°45.610'W
H01	54°09.450'N 03°49.576'W
H02	54°09.186'N 03°48.727'W
H03	54°08.923'N 03°47.879'W
H04	54°08.660'N 03°47.031'W
H05	54°08.133'N 03°45.334'W
H06	54°07.870'N 03°44.487'W



Contact us

+44 (0) 1472 252 307
kingfisher@seafish.co.uk
[@kingfisherinfo](https://www.kingfisherinfo.org)
www.kingfishercharts.org

Stay up to date: Always ensure you have the latest Kingfisher Bulletin and Offshore Fishing Plotter on-board