



Kingfisher Wind farms chart

Westermost Rough offshore wind farm
January 2020

Description

The Westermost Rough Offshore Wind Farm is operated by Orsted. It is situated approximately 8 km from shore in the Central North Sea, off the East Yorkshire coast. The wind farm is fully operational and has 35 turbines, a total capacity of 210 MW and covers an area of approximately 35 km².



Emergency procedures

1. If you suspect you have snagged a subsea cable or renewable energy structure, DO NOT endanger your vessel and crew by attempting to recover your gear.
2. Carefully plot your vessel's position as accurately as possible.
3. Advise the Coastguard of your situation, and call the 24 hour Emergency Number and state that an incident is occurring concerning a subsea cable or renewable energy structure.

Reducing the risks whilst fishing







To reduce the risks of fishing near offshore structures, it is essential to be up to date with KIS-ORCA information. KIS-ORCA information is easy to install on your vessel's fishing plotter and ensures skippers are able to make informed decisions for their safety.

The closer to the surface a subsea cable is lifted when fouled by fishing gear, the more danger there is to the fishing vessel. In the interests of fishing safety and to prevent damage to subsea structures, fishermen are advised to exercise caution when fishing in the vicinity of subsea cables and renewable energy structures. Loss of gear, fishing time and catch can result if a trawler snags a subsea structure and there is serious risk of loss of life.

Emergency contact number +44(0)7867 654242 / +44(0)7900 223346

**Westermost Rough
Offshore Wind Farm**

Key

-  Site boundary
-  Wind turbine
-  Buoy
-  Substation
-  Export cable
-  Inter array cable

Grey coloured features displayed on this chart represent additional offshore wind farm structures. Visit www.kis-orca.eu/map for more info.

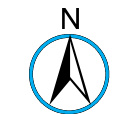
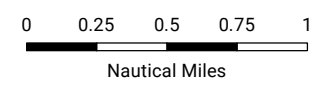


Projection: World_Mercator
Spheroid: GCS_WGS_1984
Datum: D_WGS_1984

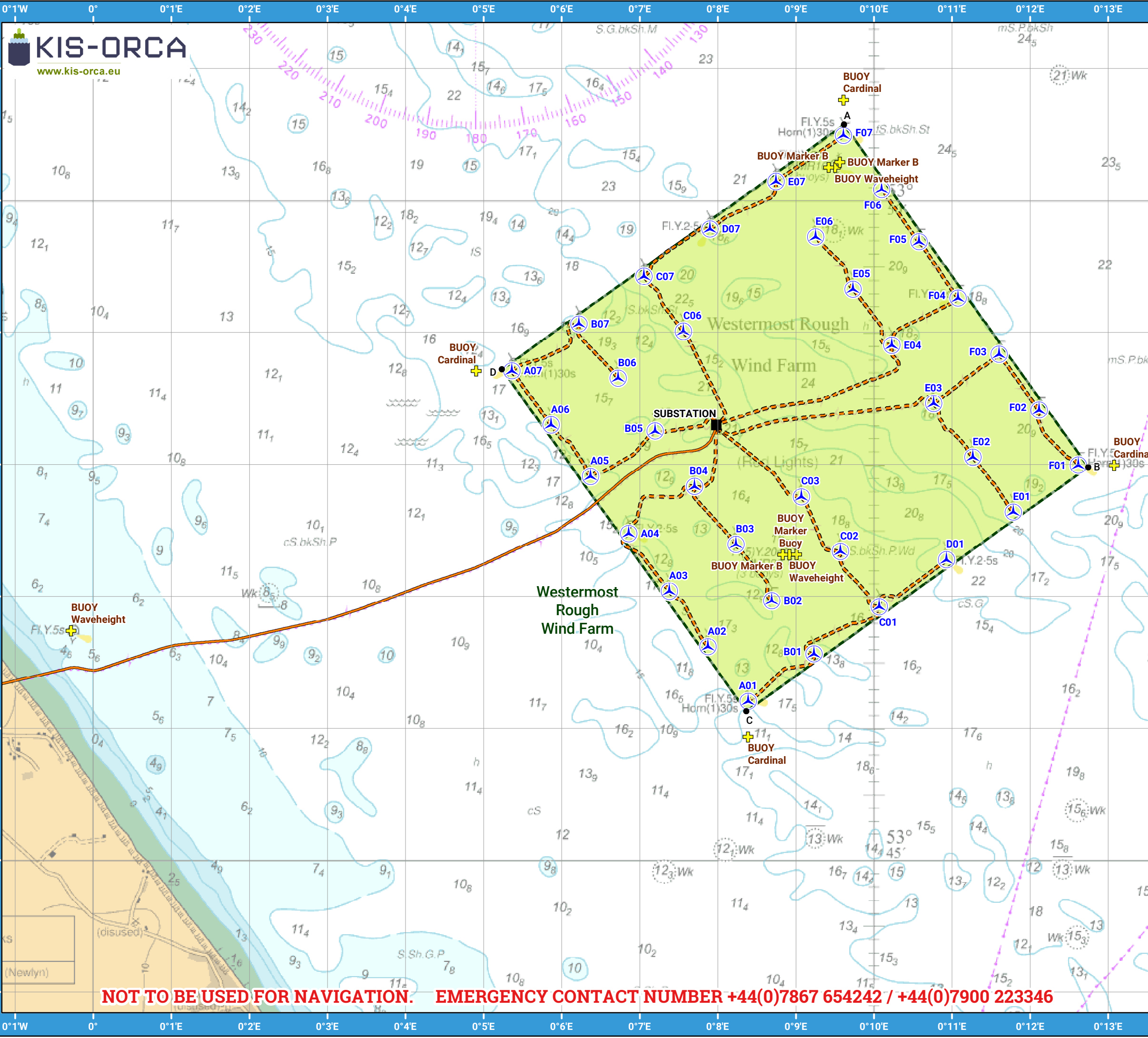
This data is issued as a guide only. Seafish, cable / structure owners and Distributors accept no responsibility for any inaccuracies however caused.

Please be aware that other structures & cables may exist in addition to those shown on this chart.

©Crown Copyright and/or database rights. Reproduced by permission of the Controller of Her Majesty's Stationery Office and the UK Hydrographic Office (www.GOV.uk/UKHO).



Scale @ A3:
1:50,000



NOT TO BE USED FOR NAVIGATION. EMERGENCY CONTACT NUMBER +44(0)7867 654242 / +44(0)7900 223346

Asset locations

Extents	Infrastructure	Infrastructure
A 53°50.575'N 00°09.615'E	BUOY Cardinal 53°47.995'N 00°13.073'E	BUOY Waveheight 53°50.250'N 00°09.500'E
B 53°47.982'N 00°12.743'E	BUOY Cardinal 53°48.710'N 00°04.905'E	BUOY Waveheight 53°47.318'N 00°08.917'E
C 53°46.131'N 00°08.365'E	BUOY Cardinal 53°50.762'N 00°09.609'E	BUOY Waveheight 53°46.741'N 00°00.281'W
D 53°48.722'N 00°05.235'E	BUOY Cardinal 53°45.936'N 00°08.386'E	SUBSTATION 53°48.300'N 00°07.980'E
	BUOY Marker B 53°50.290'N 00°09.562'E	
	BUOY Marker B 53°50.250'N 00°09.417'E	
	BUOY Marker B 53°47.318'N 00°08.829'E	
	BUOY Marker Buoy 53°47.320'N 00°09.008'E	

Turbines	Turbines
A01 53°46.207'N 00°08.387'E	D07 53°49.784'N 00°07.900'E
A02 53°46.620'N 00°07.873'E	E01 53°47.640'N 00°11.783'E
A03 53°47.041'N 00°07.379'E	E02 53°48.055'N 00°11.266'E
A04 53°47.477'N 00°06.858'E	E03 53°48.463'N 00°10.763'E
A05 53°47.911'N 00°06.369'E	E04 53°48.904'N 00°10.228'E
A06 53°48.300'N 00°05.864'E	E05 53°49.329'N 00°09.729'E
A07 53°48.710'N 00°05.362'E	E06 53°49.725'N 00°09.251'E
B01 53°46.564'N 00°09.232'E	E07 53°50.144'N 00°08.744'E
B02 53°46.969'N 00°08.691'E	F01 53°47.995'N 00°12.616'E
B03 53°47.395'N 00°08.231'E	F02 53°48.413'N 00°12.113'E
B04 53°47.835'N 00°07.701'E	F03 53°48.837'N 00°11.601'E
B05 53°48.255'N 00°07.197'E	F04 53°49.261'N 00°11.074'E
B06 53°48.654'N 00°06.722'E	F05 53°49.687'N 00°10.576'E
B07 53°49.066'N 00°06.221'E	F06 53°50.083'N 00°10.098'E
C01 53°46.924'N 00°10.066'E	F07 53°50.492'N 00°09.608'E
C02 53°47.342'N 00°09.570'E	
C03 53°47.757'N 00°09.070'E	
C06 53°49.009'N 00°07.558'E	
C07 53°49.426'N 00°07.054'E	
D01 53°47.279'N 00°10.927'E	



Contact us

+44 (0) 1472 252 307
 ✉ kingfisher@seafish.co.uk
 🐦 @kingfisherinfo
www.kingfishercharts.org

Stay up to date: Always ensure you have the latest Kingfisher Bulletin and Offshore Fishing Plotter on-board