



Kingfisher Wind farms chart

Nysted offshore wind farm
January 2020

Description

The Nysted Wind Farm is operated by Orsted. It is situated approximately 4 km from shore in the Baltic Sea, off the coast of Lolland, Denmark. The wind farm is fully operational and has 72 turbines, a total capacity of 165.6 MW and covers an area of approximately 25 km².



Emergency procedures

1. If you suspect you have snagged a subsea cable or renewable energy structure, DO NOT endanger your vessel and crew by attempting to recover your gear.
2. Carefully plot your vessel's position as accurately as possible.
3. Advise the Coastguard of your situation, and call the 24 hour Emergency Number and state that an incident is occurring concerning a subsea cable or renewable energy structure.

Reducing the risks whilst fishing




To reduce the risks of fishing near offshore structures, it is essential to be up to date with KIS-ORCA information. KIS-ORCA information is easy to install on your vessel's fishing plotter and ensures skippers are able to make informed decisions for their safety.

The closer to the surface a subsea cable is lifted when fouled by fishing gear, the more danger there is to the fishing vessel. In the interests of fishing safety and to prevent damage to subsea structures, fishermen are advised to exercise caution when fishing in the vicinity of subsea cables and renewable energy structures. Loss of gear, fishing time and catch can result if a trawler snags a subsea structure and there is serious risk of loss of life.

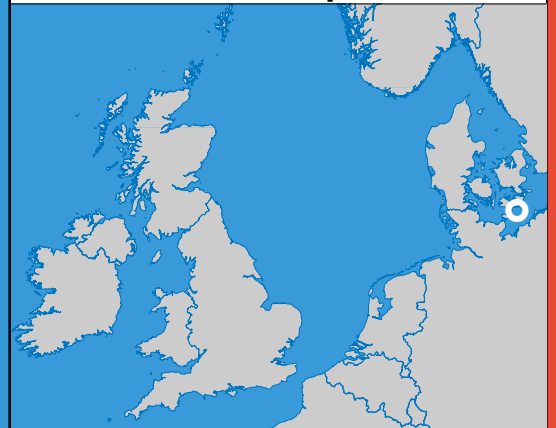
Emergency contact number +45(0) 9955 0966

**Nysted
Offshore Wind Farm**

Key

-  Site boundary
-  Inter array cable
-  Wind turbine

Grey coloured features displayed on this chart represent additional offshore wind farm structures. Visit www.kis-orca.eu/map for more info.

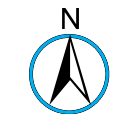
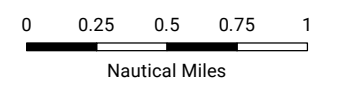


Projection: World_Mercator
Spheroid: GCS_WGS_1984
Datum: D_WGS_1984

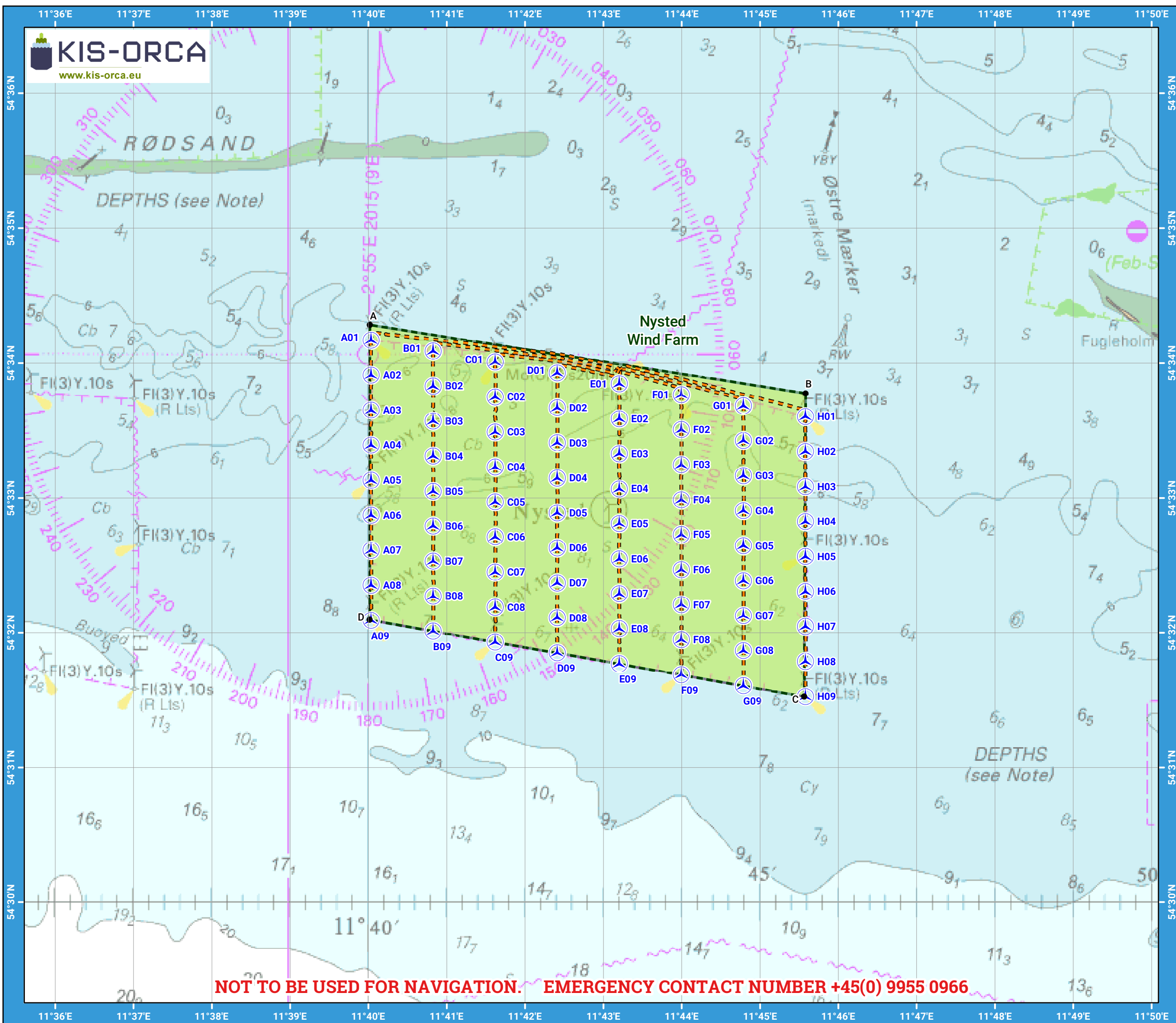
This data is issued as a guide only. Seafish, cable / structure owners and Distributors accept no responsibility for any inaccuracies however caused.

Please be aware that other structures & cables may exist in addition to those shown on this chart.

©Crown Copyright and/or database rights. Reproduced by permission of the Controller of Her Majesty's Stationery Office and the UK Hydrographic Office (www.GOV.uk/UKHO).



Scale @ A3:
1:50,000



NOT TO BE USED FOR NAVIGATION. EMERGENCY CONTACT NUMBER +45(0) 9955 0966

Asset locations

Extents

A	54°34.283'N 11°40.020'E
B	54°33.777'N 11°45.581'E
C	54°31.528'N 11°45.564'E
D	54°32.095'N 11°40.019'E

Turbines

A01	54°34.170'N 11°40.036'E
A02	54°33.911'N 11°40.036'E
A03	54°33.651'N 11°40.036'E
A04	54°33.392'N 11°40.036'E
A05	54°33.132'N 11°40.036'E
A06	54°32.872'N 11°40.036'E
A07	54°32.612'N 11°40.036'E
A08	54°32.353'N 11°40.036'E
A09	54°32.093'N 11°40.036'E
B01	54°34.090'N 11°40.828'E
B02	54°33.830'N 11°40.828'E
B03	54°33.571'N 11°40.828'E
B04	54°33.311'N 11°40.828'E
B05	54°33.051'N 11°40.828'E
B06	54°32.792'N 11°40.828'E
B07	54°32.532'N 11°40.828'E
B08	54°32.272'N 11°40.828'E
B09	54°32.012'N 11°40.828'E
C01	54°34.009'N 11°41.620'E
C02	54°33.750'N 11°41.620'E
C03	54°33.490'N 11°41.620'E
C04	54°33.230'N 11°41.620'E
C05	54°32.971'N 11°41.620'E
C06	54°32.711'N 11°41.620'E
C07	54°32.451'N 11°41.620'E
C08	54°32.191'N 11°41.620'E
C09	54°31.932'N 11°41.620'E
D01	54°33.928'N 11°42.412'E
D02	54°33.669'N 11°42.412'E
D03	54°33.409'N 11°42.412'E
D04	54°33.149'N 11°42.412'E
D05	54°32.890'N 11°42.412'E
D06	54°32.630'N 11°42.412'E
D07	54°32.370'N 11°42.412'E
D08	54°32.111'N 11°42.412'E
D09	54°31.851'N 11°42.412'E

Turbines

E01	54°33.847'N 11°43.204'E
E02	54°33.588'N 11°43.204'E
E03	54°33.328'N 11°43.204'E
E04	54°33.068'N 11°43.204'E
E05	54°32.809'N 11°43.204'E
E06	54°32.549'N 11°43.204'E
E07	54°32.290'N 11°43.204'E
E08	54°32.030'N 11°43.204'E
E09	54°31.770'N 11°43.204'E
F01	54°33.766'N 11°43.996'E
F02	54°33.507'N 11°43.996'E
F03	54°33.247'N 11°43.996'E
F04	54°32.987'N 11°43.996'E
F05	54°32.728'N 11°43.996'E
F06	54°32.468'N 11°43.996'E
F07	54°32.209'N 11°43.996'E
F08	54°31.949'N 11°43.996'E
F09	54°31.689'N 11°43.996'E
G01	54°33.685'N 11°44.788'E
G02	54°33.426'N 11°44.788'E
G03	54°33.166'N 11°44.788'E
G04	54°32.906'N 11°44.788'E
G05	54°32.647'N 11°44.788'E
G06	54°32.387'N 11°44.788'E
G07	54°32.127'N 11°44.788'E
G08	54°31.868'N 11°44.788'E
G09	54°31.608'N 11°44.788'E
H01	54°33.604'N 11°45.580'E
H02	54°33.345'N 11°45.580'E
H03	54°33.085'N 11°45.580'E
H04	54°32.825'N 11°45.580'E
H05	54°32.566'N 11°45.580'E
H06	54°32.306'N 11°45.580'E
H07	54°32.046'N 11°45.580'E
H08	54°31.787'N 11°45.580'E
H09	54°31.527'N 11°45.580'E



Contact us

+44 (0) 1472 252 307
✉ kingfisher@seafish.co.uk
🐦 [@kingfisherinfo](https://twitter.com/kingfisherinfo)
www.kingfishercharts.org

Stay up to date: Always ensure you have the latest Kingfisher Bulletin and Offshore Fishing Plotter on-board